

## Operating Instructions



• Please read these instructions carefully before using this product and keep this manual for future reference.

Matsushita Electric Industrial Co., Ltd.  
Web Site: <http://panasonic.net>

YFM284C610CA PTW1206-1116 Printed in China

## Safety Information

■ Read the operating instructions for the unit and all other components of your car audio system carefully before using the system. They contain instructions about how to use the system in a safe and effective manner. Panasonic assumes no responsibility for any problems resulting from failure to observe the instructions given in this manual.

■ This manual uses pictographs to show you how to use the product safely and to alert you to potential dangers resulting from improper connections and operations. The meanings of the pictographs are explained below. It is important that you fully understand the meanings of the pictographs in order to use this manual and the system properly.

**Warning** This pictograph intends to alert you to the presence of important operating instructions and installation instructions. Failure to heed the instructions may result in severe injury or death.

**Caution** This pictograph intends to alert you to the presence of important operating instructions and installation instructions. Failure to heed the instructions may result in injury or material damage.

**Warning**  
Observe the following warnings when using this unit.

- **The driver should neither watch the display nor operate the system while driving.**  
Watching the display or operating the system will distract the driver from looking ahead of the vehicle and can cause accidents. Always stop the vehicle in a safe location and use the parking brake before watching the display or operating the system.
- **Use the proper power supply.**  
This product is designed for operation with a negative grounded 12 V DC battery system. Never operate this product with other battery systems, especially a 24 V DC battery system.
- **Protect the Deck Mechanism.**  
Do not insert any foreign objects into the slot of this unit.
- **Do not disassemble or modify the unit.**  
Do not disassemble, modify the unit or attempt to repair the product yourself. If the product needs to be repaired, consult your dealer or an authorized Panasonic Service Center.
- **Do not use the unit when it is out of order.**  
If the unit is out of order (no power, no sound) or in an abnormal state (has foreign objects in it, is exposed to water, is smoking, or smells), turn it off immediately and consult your dealer.
- **Refer fuse replacement to qualified service personnel.**  
When the fuse blows out, eliminate the cause and have it replaced with the fuse prescribed for this unit by a qualified service engineer. Incorrect replacement of the fuse may lead to smoke, fire, and damage to the product.

**Observe the following warnings when installing.**

- **Disconnect the lead from the negative (-) battery terminal before installation.**  
Wiring and installation with the negative (-) battery terminal connected may cause electrical shock and injury due to a short circuit. Some cars equipped with the electrical safety system have specific procedures of battery terminal disconnection.
- **FAILURE TO FOLLOW THE PROCEDURE MAY LEAD TO THE UNINTENDED ACTIVATION OF THE ELECTRICAL SAFETY SYSTEM RESULTING IN DAMAGE TO THE VEHICLE AND PERSONAL INJURY OR DEATH.**
- **Never use safety-related components for installation, grounding, and other such functions.**  
Do not use safety-related vehicle components (fuel tank, brake, suspension, steering wheel, pedals, airbag, etc.) for wiring or fixing the product or its accessories.
- **Installing the product on the air bag cover or in a location where it interferes with airbag operation is prohibited.**
- **Check for piping, gasoline tank, electric wiring, and other items before installing the product.**  
If you need to open a hole in the vehicle chassis to attach or wire the product, first check where the wire harness, gasoline tank, and electric wiring are located. Then open the hole from outside if possible.
- **Never install the product in a location where it interferes with your field of vision.**
- **Never have the power cord branched to supply other equipment with power.**
- **After installation and wiring, you should check the normal operation of other electrical equipment.**  
The continuation of their using in abnormal conditions may cause fire, electrical shock or a traffic accident.
- **In the case of installation to an airbag equipped car, confirm warnings and cautions of the vehicle manufacturer before installation.**
- **Make sure the leads do not interfere with driving or getting in and out of the vehicle.**
- **Insulate all exposed wires to prevent short circuiting.**

**Caution**  
Observe the following cautions when using this unit.

- **Keep the sound volume at an appropriate level.**  
Keep the volume level low enough to be aware of road and traffic conditions while driving.
- **This unit is designed for use exclusively in automobiles.**
- **Do not operate the unit for a prolonged period with the engine turned off.**  
Operating the audio system for a long period of time with the engine turned off will drain the battery.
- **Do not expose the unit to direct sunlight or excessive heat.**  
Otherwise these will raise the interior temperature of the unit, and it may lead to smoke, fire, or other damage to the unit.
- **Do not use the product where it is exposed to water, moisture, or dust.**  
Exposure of the unit to water, moisture, or dust may lead to smoke, fire, or other damage to the unit. Make especially sure that the unit does not get wet in car washes or on rainy days.
- **Take care not to damage the leads.**  
When wiring, take care not to damage the leads. Prevent them from getting caught in the vehicle chassis, screws, and moving parts such as seat rails. Do not scratch, pull, bend or twist the leads. Do not run them near heat sources or place heavy objects on them. If leads must be run over sharp metal edges, protect the leads by winding them with vinyl tape or similar protection.
- **Use the designated parts and tools for installation.**  
Use the supplied or designated parts and appropriate tools to install the product. The use of parts other than those supplied or designated may result in internal damage to the unit. Faulty installation may lead to an accident, a malfunction or fire.
- **Do not block the air vent or the cooling plate of the unit.**  
Blocking these parts will cause the interior of the unit to over-heat and will result in fire or other damage.
- **Do not install the product where it is exposed to strong vibrations or is unstable.**  
Avoid slanted or strongly curved surfaces for installation. If the installation is not stable, the unit may fall down while driving and this can lead to an accident or injury.
- **Installation Angle**  
The product should be installed in a horizontal position with the front end up at a convenient angle, but not more than 30°. The user should bear in mind that in some areas there may be restrictions on how and where this unit must be installed. Consult your dealer for further details.
- **Wear gloves for safety. Make sure that wiring is completed before installation.**
- **To prevent damage to the unit, do not connect the power connector until the whole wiring is completed.**
- **Do not connect more than one speaker to one set of speaker leads. (except for connecting to a tweeter)**

**Observe the following cautions when installing.**

- **Refer wiring and installation to qualified service personnel.**  
Installation of this unit requires special skills and experience. For maximum safety, have it installed by your dealer. Panasonic is not liable for any problems resulting from your own installation of the unit.
- **Follow the instructions to install and wire the product.**  
Not following the instructions to properly install and wire the product could cause an accident or fire.

**Caution**  
THIS PRODUCT UTILIZES A CLASS 1 LASER. USE OF CONTROLS OR ADJUSTMENTS OR PERFORMANCE OF PROCEDURES OTHER THAN THOSE SPECIFIED HEREIN MAY RESULT IN HAZARDOUS RADIATION EXPOSURE. DO NOT OPEN COVERS AND DO NOT REPAIR BY YOURSELF. REFER SERVICING TO QUALIFIED PERSONNEL.

## Preparation

The 24-hour system is used for the clock.

**1** Turn the ignition switch until the accessory indicator lights.

**2** Press [SRC] (PWR: Power).

**3** Press [DISP] (CLOCK).  
Adj FM1

**4** Hold down [DISP] (CLOCK) for more than 2 seconds.  
000 FM1

**5** Adjust the hour.  
8:00 FM1

[>]: sets the hour ahead.  
[<]: sets the hour back.

**6** Press [DISP] (CLOCK).  
8:00 FM1

**7** Adjust the minute.  
8:15 FM1

[>]: sets the minute ahead.  
[<]: sets the minute back.

**8** Press [DISP] (CLOCK).  
8:15 FM1

**Notes:**  
• "Adj" is displayed before adjusting the clock.  
• Hold down [<] or [>] to change numbers rapidly.

**Clock Display at Power Off**

Press [DISP] (Display) to change the display.



## Maintenance

Your product is designed and manufactured to ensure the minimum of maintenance. Use a soft cloth for routine exterior cleaning. Never use benzene, thinner, or other solvents.

Cleaning the Unit

Fuse

If the replaced fuse fails, contact your nearest authorized Panasonic Service Center.

**Warning**

- Use fuses of the same specified rating (15 A). Using substitutes or fuses with higher ratings, or connecting the unit directly without a fuse could cause fire or damage to the unit. If the replaced fuse fails, contact your nearest authorized Panasonic Service Center.

## Anti-Theft System

This unit is equipped with a removable face plate. Removing this face plate makes the unit totally inoperable.

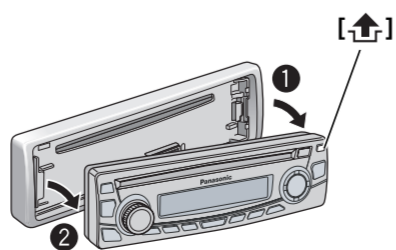
Face Plate Removing/Mounting (Anti-Theft System)

**Caution**

- This face plate is not waterproof. Do not expose it to water or excessive moisture.
- Do not remove the face plate while driving your car.
- Do not place the face plate on the dashboard or nearby areas where the temperature rises high.
- Do not touch the contacts on the face plate and the main unit, since this may result in poor electrical contact.
- If dirt or other foreign substances get on the contacts, wipe them off with a clean and dry cloth.

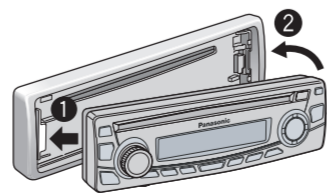
**Removing**

- 1** Turn off the power.
- 2** Press [↑]. The removable face plate will open.
- 3** Pull it out toward you.



**Mounting**

- 1** Slide the left side of the removable face plate in place.
- 2** Press the right end of removable face plate until a "click" is heard.



## Notes on Discs

If you use commercial CDs, they must have the label shown at right. Some copy-protected music CDs are not playable.



**How to hold the disc**

- Do not touch the underside of the disc.
- Do not scratch on the disc.
- Do not bend the disc.
- When not in use, keep the disc in a case.

**Do not leave discs in the following places:**

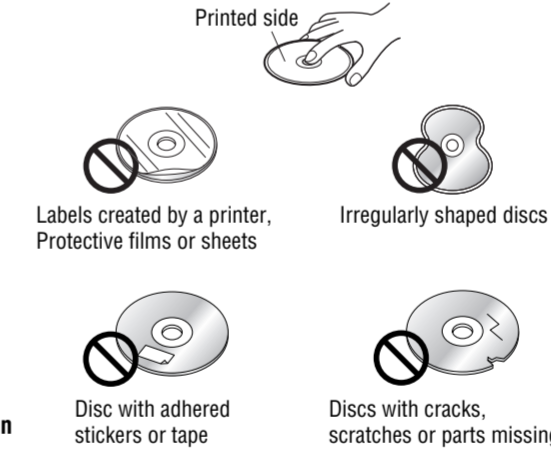
- In direct sunlight
- Near car heaters
- Dirty, dusty and damp areas
- On seats and dashboards

**Disc cleaning**

Use a dry, soft cloth to wipe from the center outward.



**Do not write on the disc label with a ballpoint pen or other hard-point pens.**



Notes on CD-Rs/RWs

- You may have trouble playing back some CD-R/RW discs recorded using CD recorders (CD-R/RW drives), either due to their recording characteristics or dirt, fingerprints, scratches, etc. on the disc surface.
- CD-R/RW discs are less resistant to high temperatures and high humidity than ordinary music CDs. Leaving them inside a car for extended periods may damage them and make playback impossible.
- Some CD-R/RWs cannot be played back successfully due to incompatibility among writing software, a CD recorder (CD-R/RW drive) and the discs.
- This player cannot play the CD-R/RW discs if the session is not closed.
- This player cannot play the CD-R/RW discs which contain other than CD-DA data.
- Be sure to observe the instructions of the CD-R/RW disc for handling it.

## Specifications

**General**

Power supply	:12 V DC (11 - 16 V DC), test voltage 14.4 V, negative ground
Current consumption	:Less than 2.2 A (CD mode; 0.5 W x 4 channels)
Maximum power output	:50 W x 4 channels (at 1 kHz), volume control maximum
Power output	:18 W x 4 channels (1 kHz, 1%, 4 Ω)
Tone adjustment range	:Bass: ±12 dB at 100 Hz, Treble: ±12 dB at 10 kHz
Speaker impedance	:4 - 8 Ω
Pre-amp output voltage	:2.5 V (CD mode, 1 kHz, 0 dB)
Pre-amp output impedance	:200 Ω
Dimensions (W x H x D)	:178 x 50 x 155 mm
Weight	:1.3 kg

**CD Player**

Sampling frequency	:8 times oversampling
DA converter	:1 bit DAC System
Pick-up type	:Astigma 3-beam
Light source	:Semiconductor laser
Wave length	:790 nm
Frequency response	:20 Hz - 20 kHz (±1 dB)
Signal to noise ratio	:96 dB
Wow and flutter	:Below measurable limits
Channel separation	:75 dB

**FM Stereo Radio**

Frequency range	:87.5 MHz - 108 MHz
Usable sensitivity	:6 dBμV (S/N 30 dB)
Frequency response	:30 Hz - 15 kHz (±3 dB)
Alternate channel selectivity	:75 dB
Stereo separation	:35 dB (1 kHz)
Image rejection ratio	:75 dB
IF rejection ratio	:100 dB
Signal to noise ratio	:62 dB

**AM Radio**

Frequency range	:531 kHz - 1 602 kHz
Usable sensitivity	:28 dBμV (S/N 20 dB)

**Notes:**

- Specifications and design are subject to modification without notice due to improvements.
- Some figures and illustrations in this manual may be different from your product.



# Before Reading These Instructions

Panasonic welcomes you to our constantly growing family of electronic products owners. We endeavor to give you the advantages of precise electronic and mechanical engineering, manufactured with carefully selected components, and assembled by people who are proud of the reputation their work has built for our company. We know this product will bring you many hours of enjoyment, and after you discover the quality, value and reliability we have built into it, you too will be proud to be a member of our family.

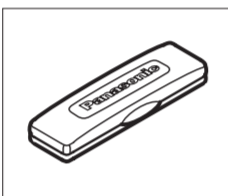
## Accessories

	<b>Operating Instructions</b> (English: YFM284C610CA) (한국어: YFM284C612CA)		<b>Installation kit (ZZBISC1101U-J)</b> Lock Cancel Plate Q'ty: 2 Mounting Bolt Q'ty: 1 Rubber Bushing Q'ty: 1		<b>Mounting Collar *</b> (FX0214C384ZB) Q'ty: 1
	<b>Installation Instructions</b> (YFM294C073CA) Q'ty: 1		<b>Trim Plate *</b> (YFC054C079YA) Q'ty: 1		<b>Power Connector</b> (YGAJ021012) Q'ty: 1

- Notes:**
- The number in parentheses underneath each accessory part name is the part number for maintenance and service.
  - Accessories and their part numbers are subject to modification without prior notice due to improvements.
  - Mounting Collar and Trim Plate are mounted on the main unit at shipment. \*

### Request for use of the Removable Face Plate Case

- To avoid trouble and ensure safety, use the optional Removable Face Plate Case (YFC054C061ZB)



# General

**[VOL]** (Volume) (Turn) adjusts the volume.

**[D-M]** (Direct Memory) tunes into the station memorized in D-M. (Hold it down for more than 2 seconds to memorize the current station.)

**[MUTE]** toggles mute on/off.

Light when mute is ON.

**[SQ]** (Sound Quality) selects a sound type (SQ).

**[SRC]** (Source) selects a source. **[PWR]** (Power) toggles power on/off.

## General Operations

### Power On/Off

Turn your car's ignition switch to the ACC or ON position.  
**Power on:** Press **[SRC]** (**PWR**).  
**Power off:** Hold down **[SRC]** (**PWR**) for more than 1 second.

### Source Selection

Press **[SRC]** to change the source.  
**Radio** → **Disc Player**

### Volume Adjustment

(Setting Range: 0 to 40, Default: 18)  
 Turn **[VOL]**.

### Mute

**ON:** Press **[MUTE]**. **[MUTE]** lights.)  
**OFF:** Press **[MUTE]** again.

### SQ (Sound Quality)

SQ is a function that can call up various sound types at the touch of button in accordance with your listening music type. Press **[SQ]** to select the sound type as follows:

**[FLAT]** (FLAT) flat frequency response: does not emphasize any part. (Default)

**[ROCK]** (ROCK) speedy and heavy sound: exaggerates bass and treble.

**[POP]** (POP) wide-ranged and deep sound: slightly emphasizes bass and treble.

**[VOCAL]** (VOCAL) clear sound: emphasizes middle tone and slightly emphasizes treble.

**Note:** Settings of SQ, bass and treble are influenced one another. If such an influence causes distortion to the audio signal, readjust bass/treble or volume.

# Radio (FM/AM)

**[BAND]** selects a band in the radio source. **[APM]** (Auto Preset Memory) executes APM in the radio source. (Hold it down for more than 2 seconds.)

**[D-M]** (Direct Memory) tunes into the station memorized in D-M. (Hold it down for more than 2 seconds to memorize the current station.)

**[DISP]** (Display) switches the information on the display.

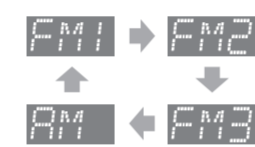
**[SRC]** (Source) selects a source.

**Preset buttons [1] - [6]** selects a preset station in the radio source, and presets the current station. (Hold it down for more than 2 seconds.)

**[TUNE <] [TUNE >]** down/up the frequency. (Hold it down for more than 0.5 seconds for seek tuning.)

## Operation Flow

- Press **[SRC]** to select the radio source.
- Press **[BAND]** to select a band.



### Frequency adjustment

**[TUNE <]** Lower  
**[TUNE >]** Higher

**Note:** Hold down either of them for more than 0.5 seconds and release it for station search.

### Preset station selection

Press the corresponding preset button from **[1] - [6]** to tune in a preset station.

# Disc Player

**Disc slot** takes a disc in with the label-side facing up. **Note:** The power will be turned on automatically when a disc is loaded.

**[TRACK <<] [TRACK >>]** skip to the previous/next track in the player mode. Hold down either of them for fast reverse/fast forward.

**[EJECT]** (Eject) ejects the disc.

**[DISP]** (Display) switches the information on the display.

**[SRC]** (Source) selects a source.

**[SCAN]** toggles on/off the scan play. (Hold it down for more than 2 seconds.)

**Direct selection buttons [1] - [6]** (7) - (12) (Hold down one of them for more than 2 seconds.) select a track directly.

**[REP]** (Repeat) toggles on/off the repeat play. **[RANDOM]** (RANDOM) toggles on/off the random play. (Hold it down for more than 2 seconds.)

### Caution

- Do not insert a disc when the **[DISC]** indicator lights.
- Refer to the section of "Notes on Discs".
- This unit does not support 8 cm discs.

- If you insert an 8 cm disc and cannot eject it, turn the ignition key to the ACC OFF position once and turn the key to the ACC ON position again, then press **[EJECT]**.
- This unit does not support MP3 and WMA disc playback.
- This unit does not support CD text display.
- Do not insert foreign matter into the disc slot.

## Operation Flow

- Press **[SRC]** to select the Disc Player source.
- Select a desired portion.

### Track selection

Press **[TRACK <<] / [TRACK >>]**.

**Note:** To perform fast forward/reverse, hold down either of them.

### Pause

Press **[BAND] (II / ▶)**.  
 Press again to cancel.

### Direct track selection

Press a track number button from **[1] - [6]**.  
 • The corresponding track (1-6) starts playing.  
 Hold down a track number button from **[1] - [6]** (**(7) - (12)**) for more than 2 seconds.  
 • The corresponding track (7-12) starts playing.

## Player Source Display

**Display change**  
 Press **[DISP]** to change the display.

Player source display (Default)  
 007 2  
 Clock display

## Random, Repeat, Scan

### Random play

All the available tracks are played in a random sequence.  
 Hold down **[REP]** (**RANDOM**) for more than 2 seconds.  
 Hold down again to cancel.

### Repeat play

The current track is repeated.  
 Press **[REP]**.  
 Press again to cancel.

### Scan play

The first 10 seconds of each track is played in sequence.  
 Hold down **[SQ]** (**SCAN**) for more than 2 seconds.



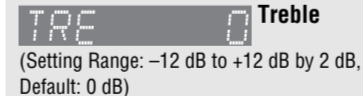
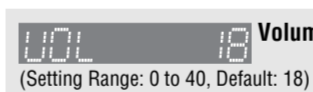
# Audio Settings

**[VOL]** selects a value in the audio menu. **(PUSH SEL)** (Push to Select) selects items in the audio menu.

**[DISP]** (Display) exits from the audio menu.

## Audio menu

- Press **[VOL]** (**PUSH SEL**) to display the audio menu display. **Note:** If no operation takes place for more than 5 seconds in the audio menu (2 seconds in Main volume adjustment), the display returns to the regular mode.
- Press **[VOL]** (**PUSH SEL**) to select a mode to be adjusted.
- Turn **[VOL]** clockwise or counterclockwise to adjust.



**Note:** If the fader is set to front, the pre-amp. output (rear) is decreased.

# Troubleshooting

### If You Suspect Something Wrong

Check and take steps as described below. If the described suggestions do not solve the problem, it is recommended to take the unit to your nearest authorized Panasonic Service Center. The product should be serviced only by qualified personnel. Please refer the checking and the repair to professionals. Panasonic shall not be liable for any accidents arising out of neglect of checking the unit or your own repair after your checking.

**Never take measures especially for those other than indicated by *italic* letters in "Check point" described below because those are too dangerous for users to handle themselves.**

Trouble	Check point
<b>Common</b>	
No power	<ul style="list-style-type: none"> <li>Start the engine. (Or turn the ignition switch to the ACC position.)</li> <li>Verify the wiring. (Ex. battery lead, power lead, ground lead, etc.)</li> <li>Fuse blown (Contact the nearest Panasonic Service Center.)</li> <li>Ask a professional for fuse replacement.</li> <li>Be sure to use the same rated fuse.</li> </ul>
No sound	<ul style="list-style-type: none"> <li>Disable the mute function.</li> <li>Verify the wiring.</li> <li>Wait until the dew disappears before turning on the unit.</li> </ul>
Noise	<ul style="list-style-type: none"> <li>Make sure that grounding is established properly.</li> </ul>
No sound from left, right, front, or rear speaker	<ul style="list-style-type: none"> <li>Adjust the balance and fader.</li> <li>Verify the wiring.</li> </ul>
Left and right sounds are reversed	<ul style="list-style-type: none"> <li>Connect the speaker lead correctly.</li> </ul>
<b>Radio</b>	
Frequent noise	<ul style="list-style-type: none"> <li>Tune in to another station of high-intensity waves.</li> <li>Make sure that the antenna mounted point is grounded properly.</li> </ul>
Preset data deleted	<ul style="list-style-type: none"> <li>The preset memory is cleared to return to the original factory setting when the power connector or battery is disconnected.</li> </ul>

### Warning

- Do not use the unit in an irregular condition, for example, without sound, or with smoke or a foul smell, which can cause ignition or electric shock. Immediately stop using the unit and consult your dealer.
- Never try to repair the unit by yourself because it is dangerous to do so.

Trouble	Check point
<b>CD Player</b>	
No sound, or disc is automatically ejected	<ul style="list-style-type: none"> <li>Load the disc correctly.</li> <li>Clean the disc.</li> </ul>
Sound skip, poor sound quality	<ul style="list-style-type: none"> <li>Clean the disc.</li> </ul>
Sound skip due to vibration	<ul style="list-style-type: none"> <li>The maximum permissible tilt angle is 30°.</li> <li>Secure the unit.</li> </ul>
Disc not ejectable	<ul style="list-style-type: none"> <li>Press <b>[▲]</b>. If the disc is still not eject- ed, contact the nearest Panasonic Service Center.</li> </ul>
<b>Error Display Messages</b>	
E1	(The disc is ejected automatically.) The disc is dirty, or is upside down. The disc has scratches.
E2	Check the disc.
E3	No operation by some cause. If normal operation is not restored, call the store where you purchased the unit or the nearest Service Center to ask for repairs.



## Before Installation/설치하기 전에

Consult a professional for installation.

●Verify the radio using the antenna and speakers before installation.

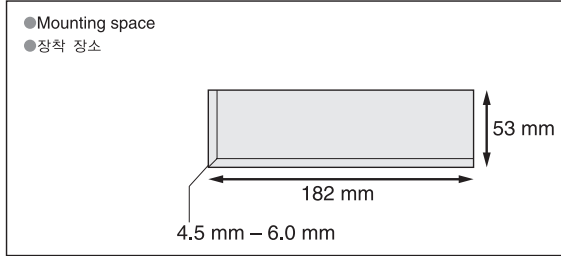
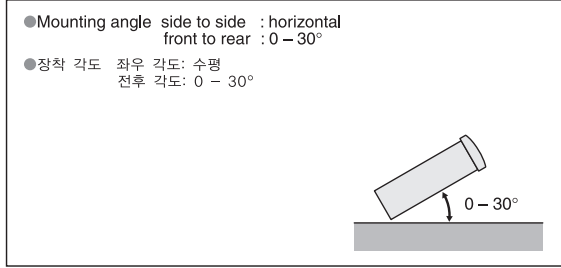
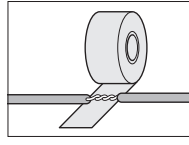
설치에 관해서는 전문가에게 상담해 주십시오.

●설치하기 전에 안테나 및 스피커를 사용하여 라디오를 확인해 주십시오.

## Before Wiring/배선을 하기 전에

Exclusively operated with 12 V battery with negative (-) ground.  
Connect the power lead (red) last.  
Connect the battery lead (yellow) to the positive (+) terminal of the battery or fuse block terminal (BAT).  
Strip about 5 mm of the lead ends for connection.  
Apply insulating tape to bare leads.  
Secure loosened leads.

음극 (-) 접지의 12볼트 배터리로만 작동됩니다.  
전원 리드선 (적색) 을 마지막으로 접속합니다.  
배터리 리드선 (황색)을 배터리의 양극(+) 단자 또는퓨즈 블록 단자 (BAT) 에 접속합니다.  
접속시에는 리드선 끝부분을 약5 mm 벗겨냅니다.  
드러난 리드선에는 절연 테이프를 감아 주십시오.  
느슨한 리드선을 고정합니다.



Remove mounting collar ① and trim plate ④ from the main unit temporarily, which are already mounted at shipment.  
발송시에 장착되어 있는 장착 칼라 ① 및 트림 플레이트 ④ 를 임시로 본체로부터 탈착해 주십시오.

## Supplied Hardware/부속품의 하드웨어

No.	Item	Diagram	Q'ty	No.	Item	Diagram	Q'ty
①	Mounting collar 장착 칼라 FX0214C384ZB		1	④	Trim plate 트림 플레이트 YFC054C079YA		1
②	Mounting bolt (5 mm ø) 장착 볼트 (5 mm ø)		1	⑤	Power connector 전원 커넥터 YGAJ021012		1
③	Rubber bushing 고무 부싱		1	⑥	Lock cancel plate 로크 캔슬 플레이트		2

\* ②, ③ and ⑥ consist of a set. \* ②, ③ 및 ⑥ 은 세트입니다. (ZZBISC1101U-J)

# Panasonic

CD Player/Receiver  
CD플레이어/라디오

Model: CQ-C1105W



COMPACT  
disc  
DIGITAL AUDIO

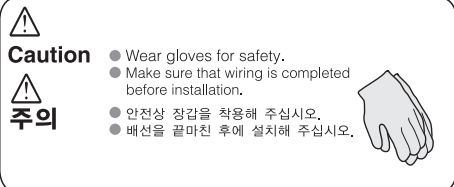
●Please read these instructions carefully before using this product and keep this manual for future reference.  
●제품의 올바른 사용을 위하여 본 설명서를 숙독하시고 잘 보관하시어 필요하실 때에 참조하시기 바랍니다.

Matsushita Electric Industrial Co., Ltd.  
Web Site: <http://panasonic.net>

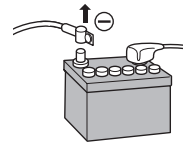
YFM294C073CA PTW1206-1106 Printed in China

# Installation/설치

## How to install the unit/장치를 설치하는 방법



1 Remove the cable from the battery negative terminal.  
배터리의 음극 단자로부터 케이블을 탈착합니다.



2 Mounting collar ① insertion. Bend mounting tabs.  
장착 칼라 ① 삽입. 장착 태브를 구부립니다.

Bend appropriate tabs to secure the unit without backlash.  
장착 태브를 적당한 만큼 구부려 장치가 헐겁지 않도록 고정시킵니다.

3 Connection of power connector ⑤  
전원 커넥터 ⑤의 접속

1 Screw the mounting bolt ② into the main unit.  
2 Secure to the fire wall.  
3 Snap the right and left springs into each hole.

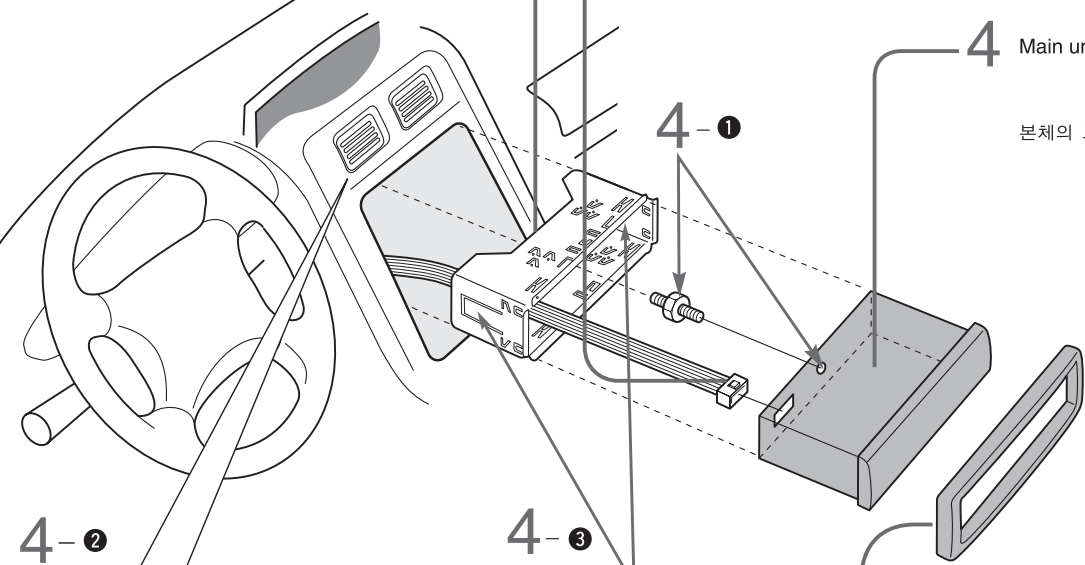
1 장착 볼트 ② 를 돌려 본체에 고정시킵니다.  
2 방화벽에 고정시킵니다.  
3 좌우 스프링을 각 구멍에 끼웁니다.

4 Main unit securing  
본체의 고정

4-1

4-2

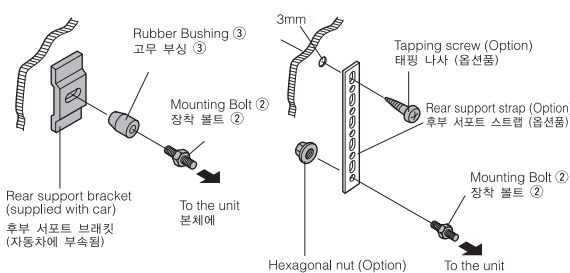
4-3



Securing to fire wall  
방화벽에의 고정

Using the rubber bushing ③  
고무 부싱 ③의 사용

Using the rear support strap (Option)  
후부 서포트 스트랩 (옵션품)의 사용

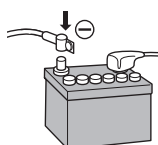


Clank!

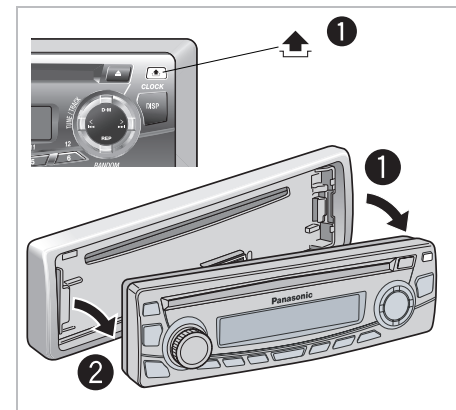
Snapping point  
끼우는 위치

5 Trim plate ④ mounting  
트림 플레이트 ④ 장착

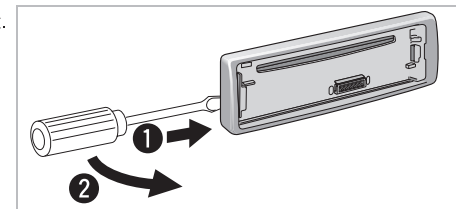
6 Battery cable reconnection  
배터리 케이블 재접속



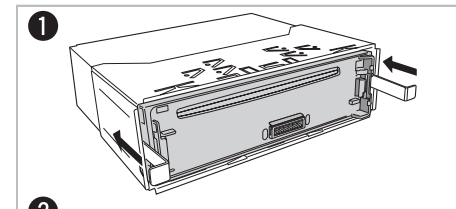
## How to remove the unit/장치를 탈착하는 방법



1 Remove the face plate.  
페이스 플레이트를 탈착합니다.

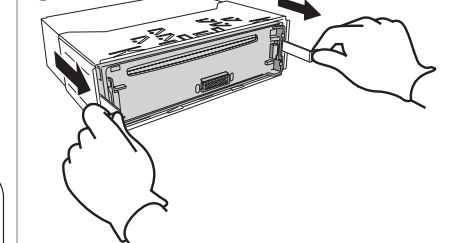


2 Remove the trim plate ④.  
트림 플레이트 ④ 를 탈착합니다.



3 Lock release  
1 Insert the lock cancel plate ⑥ until you hear a click.  
2 Pull the main unit.

로크를 릴리스합니다.  
1 소리가 날 때까지 로크 캔슬 플레이트 ⑥ 를 삽입합니다.  
2 본체를 잡아 당깁니다.



4 Pull out the unit with both hands.  
양손으로 장치를 잡아 당깁니다.

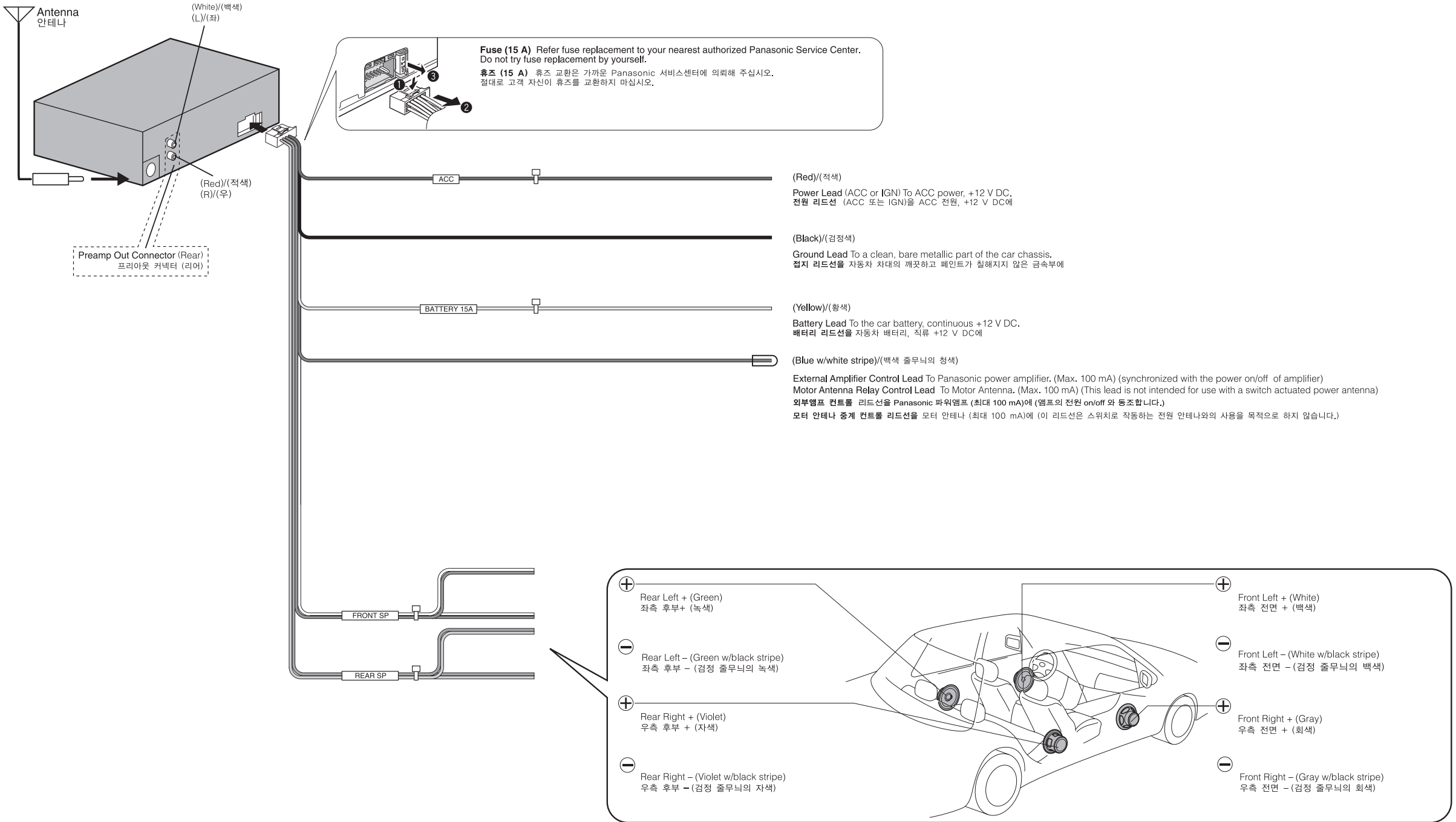
**Caution**  
When this unit is installed in dashboard, ensure that there is sufficient air flow around the unit to prevent damage from overheating, do not block any ventilation holes on the unit.

**주의**  
본 제품을 계기반에 설치할 경우에는 과열에 의한 손상을 방지하기 위하여 공기의 흐름이 가능한 충분한 공간을 장치 주위에 확보하고 장치의 환기부를 차단하지 않도록 주의해 주십시오.

# Wiring/배선

**⚠ Caution**  
To prevent damage to the unit, do not connect the power connector until the whole wiring is completed.

**⚠ 주의**  
장치의 손상을 방지하기 위하여 전 배선이 종료된 후에 전원 커넥터를 접속해 주십시오.



## Final Installation/최종 설치

**Lead Connections**  
Connect all wires, making sure that each connection is insulated and secure. Bundle all loose wires and fasten them with tape so they will fall down later. Now insert the unit into the mounting collar.

**리드선 접속**  
모든 배선을 접속한 다음 접속부는 절연하고 고정시킵니다. 또한 느슨한 배선을 모아 테이프로 감싸서 떨어지지 않도록 한 후에 장치를 장착 칼라에 삽입합니다.

## Final Check/최종 확인

1. Make sure that all wires are properly connected and insulated.
2. Make sure that the main unit is securely held in the mounting collar.
3. Turn on the ignition to check the unit for proper operation.

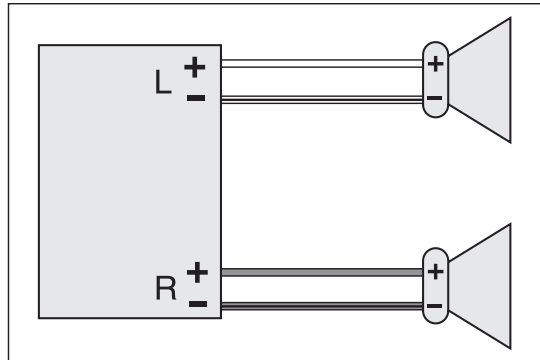
If you have difficulties, consult your nearest authorized professional installer for assistance.

1. 모든 배선이 올바르게 접속되고 절연되었는지를 확인합니다.
2. 본체가 장착 칼라에 확실히 장착되었는지를 확인합니다.
3. 점화 스위치를 켜고 장치가 올바르게 조작하는지를 확인합니다.

문제가 있을 경우에는 가까운 설치 전문업자에 상담해 주십시오.

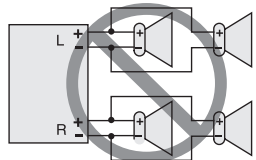
## Speaker Connection/스피커 접속

Connect as follows.  
하기와 같이 접속합니다.



- Use ungrounded speakers only. Allowable input: 50 W Impedance: 4 - 8 Ω
- Use of speakers which do not match the specifications can cause burning, smoking or damage of the speakers.
- Distance between speaker and amplifier: 30 cm or more

- 비접지 스피커만을 사용합니다. 허용 입력: 50 W 이상 임피던스: 4 - 8 Ω
- 사양이 다른 스피커를 사용하면 화재, 발연 또는 스피커 손상의 원인이 됩니다.
- 스피커와 앰프의 거리: 30 cm 이상



**⚠ Caution**  
Do not connect more than one speaker to one set of speaker leads. (except for connecting to a tweeter)

**⚠ 주의**  
한 세트의 스피커 리드선에 스피커를 하나 이상 접속하지 마십시오. (고음용 확성기 접속을 제외하고)

- Do not use a 3-wire type speaker system having a common earth lead.
- 공통의 접지선을 사용하는 3-배선의 스피커 시스템을 사용하지 마십시오.